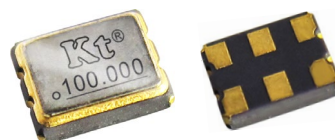
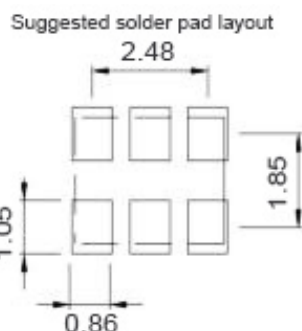
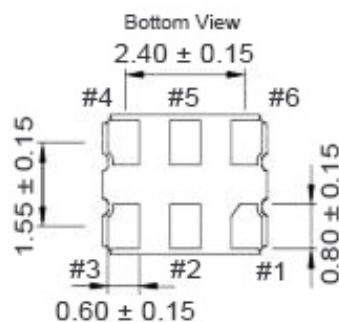
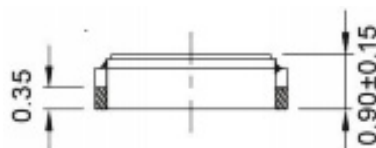
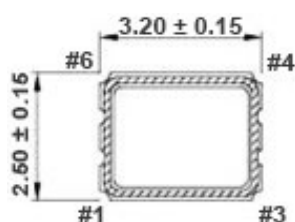


Kingtronics®**QKT-3S3225****DIFFERENTIAL CRYSTAL OSCILLATOR****FEATURES**

- LVDS LVPECL HCSL
- Wide Frequency Range
- Low Operating Voltage: 1.8V/2.5V/3.3V
- Tri-state Available

PICTURE**ELECTRICAL SPECIFICATIONS**

| | |
|-----------------------------------|------------------------------------------------------|
| Frequency Range | 10MHz to 250MHz |
| Output | LVDS, LVPECL, HCSL |
| Supply Voltage | 1.8V, 2.5V, 3.3V ($\pm 10\%$) |
| Frequency Stability | ± 20 ppm |
| Operating Temperature Range | $-40^{\circ}\text{C} \sim +85^{\circ}\text{C}$ |
| Current Consumption | 100mA max. |
| Output Load | 100 Ω between output and complementary output |
| Symmetry | 45% to 55% |
| Start-up Time | 3ms max. |
| Rise/ Fall Time | 1ns max. |
| Output Enable/ Disable Time | Enable: 10ms max. Disable: 0.2 μs max. |
| Output Logic High "1" | 70%VDD. |
| Output Logic Low "0" | 30%VDD. |
| Phase Jitter | 0.5psec. @12KHz to 20MHz |
| Storage Temperature Range | $-55^{\circ}\text{C} \sim +125^{\circ}\text{C}$ |
| Aging (at 25 $^{\circ}\text{C}$) | ± 2 ppm/year max. |

MECHANICAL DIMENSIONS: Unit: mm

| Terminal | Connection |
|----------|----------------------|
| #1 | Tri-state or N.C |
| #2 | N.C |
| #3 | GND |
| #4 | Output |
| #5 | Complementary Output |
| #6 | Vcc |

| Tri-state Function | |
|--------------------|--------------|
| Tri-state pin | Output |
| High or Floating | Active |
| Low | Hi-Impedance |

Note: Specifications are subject to change without notice.

Kingtronics® International CompanyWebsite: www.kingtronics.com Email: info@kingtronics.com Tel: (852) 8106 7033 Fax: (852) 8106 7099