

# Kingtronics®

# RKT-3224

## Trimming Potentiometers

### FEATURES

- Multi-loop/Glass glaze/Seal
- Surface mounted /4mm square

#### Electrical Characteristics

|                              |                                       |
|------------------------------|---------------------------------------|
| Standard Resistance Range    | 10Ω - 1MΩ                             |
| Resistance Tolerance         | ±10%                                  |
| Absolute Minimum Resistance  | ≤1%R or 2Ω                            |
| Contact Resistance Variation | CRV≤3% or 3Ω<br>(whichever is larger) |
| Insulation Resistance        | R1≥1GΩ(100Vac)                        |
| Withstand Voltage            | 101.3 kPa 600V · 8.5 kPa 250V         |
| Effective Travel             | 11±2 turns nom                        |

#### Environmental Characteristics

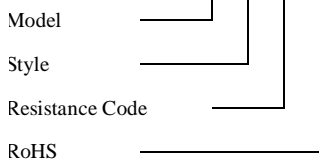
|                                |   |
|--------------------------------|---|
| Power Rating<br>(200volts max) | +70°C 0.25W · +125°C 0W                                       |
| Temperature Range              | -55°C ~ +125°C  |
| Temperature Coefficient        | ±100ppm/°C or ±250ppm/°C                                      |
| Temperature Variation          | R≤±2%R · Δ(Uab/Uac)≤±1%                                       |
| Vibration                      | 10 - 500Hz, 0.75mm, 6h<br>ΔR≤±1%R · Δ(Uab/Uac)≤±2%            |
| Collision                      | 390m/s <sup>2</sup> , 4000cycles, ΔR≤±1%R                     |
| Electrical Endurance at 70°C   | 0.5W, 1000h, ΔR≤±3%R  |
| Rotational Life                | 200 cycles<br>ΔTR≤10%R, CRV≤3% or 5Ω<br>(whichever is larger) |

#### Physical Characteristics

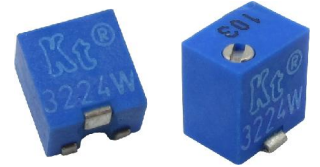
|                    |  |
|--------------------|--|
| Starting Torque    | ≤25mN·m  |
| Marking            | Resistance Tolerance<br>(When no identification, it is of ± 10%)<br>Resistance Code, Model |
| Standard Packaging | 250pcs, per tape reel  |

#### How to Order

RKT-3224 --- W --- 103 --- R

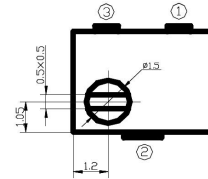
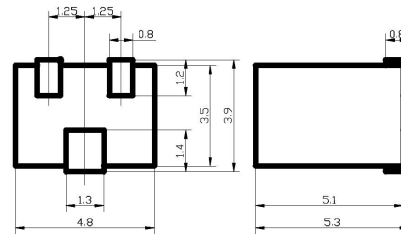


### PICTURE

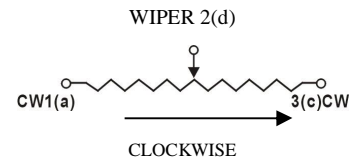
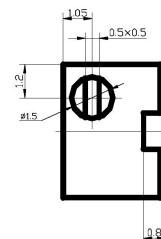
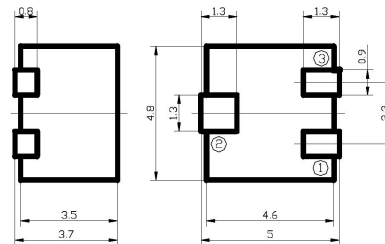


#### Common Dimensions (mm)

RKT-3224W



RKT-3224J



Tolerance is ±0.25 if no identification

#### Resistance Table

| Resistance (Ohms) | Resistance Code |
|-------------------|-----------------|
| 10                | 100             |
| 20                | 200             |
| 50                | 500             |
| 100               | 101             |
| 200               | 201             |
| 500               | 501             |
| 1,000             | 102             |
| 2,000             | 202             |
| 5,000             | 502             |
| 10,000            | 103             |
| 20,000            | 203             |
| 25,000            | 253             |
| 50,000            | 503             |
| 100,000           | 104             |
| 200,000           | 204             |
| 250,000           | 254             |
| 500,000           | 504             |
| 1,000,000         | 105             |

Note: Specifications are subject to change without notice.

Special resistances available.

**Kingtronics® International Company**