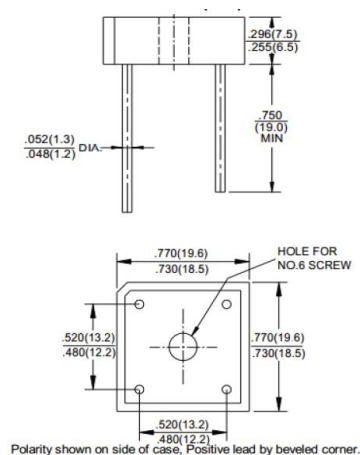


Kingtronics®**KBPC8005 THRU
KBPC810****SINGLE-PHASE GLASS PASSIVATED BRIDGE RECTIFIERS****REVERSE VOLTAGE 50 to 1000 Volts FORWARD CURRENT 8.0 Ampere****FEATURES**

High forward surge current capability
 Ideal for printed circuit board
 High isolation voltage from case to leads
 High temperature soldering guaranteed:
 260°C /10 second, at 5 lbs. (2.3kg) tension.

MECHANICAL DATA

Case: Molded plastic body
 Terminal: Lead solderable per MIL-STD-202E
 method 208C
 Polarity: Polarity symbols molded on case
 Mounting: Thru hole for #6 screw, 5.0 in.-lbs torque max
 Weight: 0.20ounce, 5.62 grams

BR-8**MAXIMUM RATINGS AND ELECTRICAL CHARACTERISTICS**

Ratings at 25°C ambient temperature unless otherwise specified ,
 Single phase, half wave, 60Hz, resistive or inductive load.
 For capacitive load derate current by 20%

Dimensions in inches and (millimeters)

PARAMETER	SYMBOL	KBPC 8005	KBPC 801	KBPC 802	KBPC 804	KBPC 806	KBPC 808	KBPC 810	UNIT
Maximum Repetitive Peak Reverse Voltage	V_{RRM}	50	100	200	400	600	800	1000	Volts
Maximum RMS Voltage	V_{RRM}	35	70	140	280	420	560	700	Volts
Maximum DC Blocking Voltage	V_{DC}	50	100	200	400	600	800	1000	Volts
Maximum Average Forward Rectified Output Current at TC=100 °C	$I_{(AV)}$	8.0							Amps
Non-Repetitive Peak Forward Surge Current 8.3ms Single half sine-wave superimposed on rated load (JEDEC Method)	I_{FSM}	175							Amps
Rating for Fusing(t<8.3ms)	I^2t	64							A ² S
Maximum Instantaneous Forward Voltage at 4.0A	V_F	1.0							Volts
Maximum DC Reverse Current at rated DC blocking voltage	$T_A=25^\circ\text{C}$	5.0							uAmps
	$T_A=125^\circ\text{C}$	1.0							mAmps
Isolation Voltage from case to leads	V_{ISO}	2500							V_{AC}
Typical Thermal Resistance (Note 1)	$R_{\theta JC}$	6.0							°C/W
Operating Temperature Range	T_J	-55 to +150							°C
Storage Temperature Range	T_{STG}	-55 to +150							°C

1- Unit mounted on 8.7"×8.7"×0.24" thick (22×22×0.6 cm) Al. plate.

Kingtronics® International CompanyWebsite: www.kingtronics.com Email: info@kingtronics.com Tel: (852) 8106 7033 Fax: (852) 8106 7099

Kingtronics®

KBPC8005 THRU KBPC810

RATINGS AND CHARACTERISTIC CURVES

FIG.1-TYPICAL FORWARD CURRENT DERATING CURVE

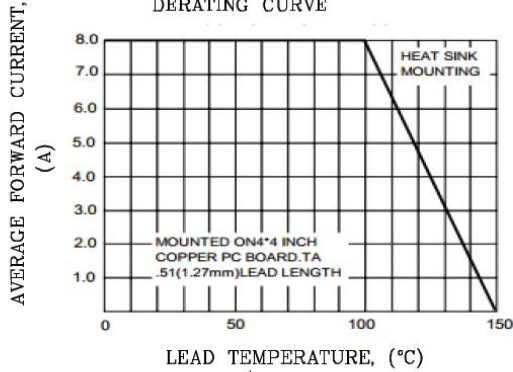


FIG.2-MAXIMUM NON-REPETITIVE PEAK FORWARD SURGE CURRENT

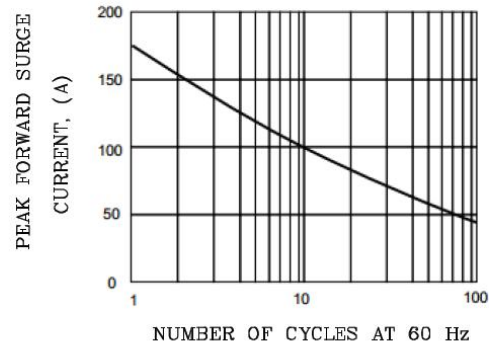


FIG.3-TYPICAL INSTANTANEOUS FORWARD CHARACTERISTICS

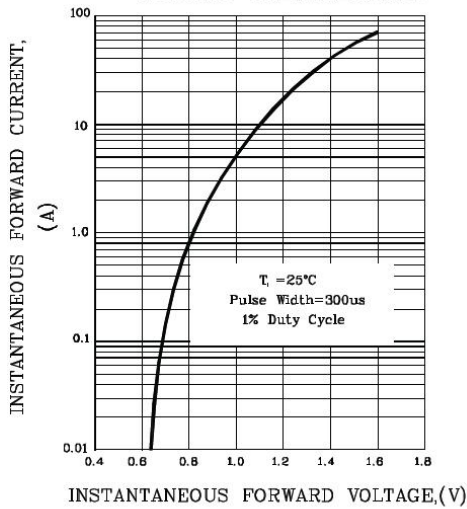


FIG.4-TYPICAL REVERSE CHARACTERISTICS

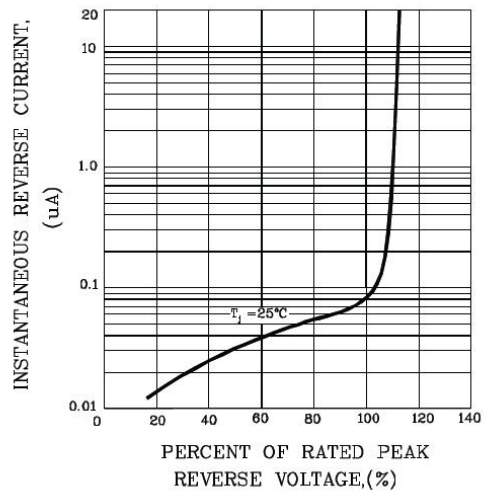
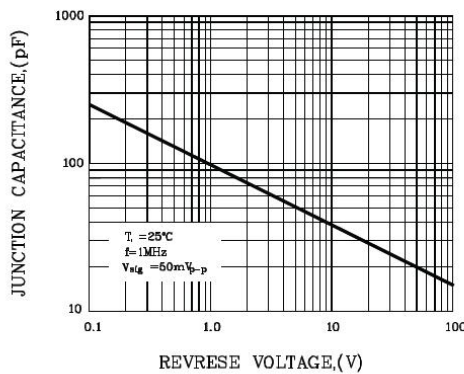


FIG.5-TYPICAL JUNCTION CAPACITANCE



Note: Specifications are subject to change without notice.

Kingtronics® International Company